

INVERTEC® V160

Spare Parts.....	1
INVERTEC V160-S, V160-T & V160-TPulse	1
Figure A.....	1
Figure A: Machine Assembly.....	2
INVERTEC V160-S, V160-T & V160-TPulse 2V	3
Figure A.....	3
Figure A: Machine Assembly.....	4
Electrical Schematic.....	5
V160-S code 52032, 52033	5
V160-T code 52035.....	5
V160-TP code 52038, 52039	6
V160-S 2V code 52034.....	6
V160-T 2V code 52037	7
V160-TP 2V code 52040.....	7



Spare Parts

SP52032/52033/52035/52038/52039 Rev. 0
07/03

INVERTEC V160-S, V160-T & V160-TPulse

ASSEMBLY PAGE NAME		Machine Assembly					
CODE NO.:	FIGURE NO.:	A					
52032	V160-S CE	1					
52033	V160-S AUS	2					
52035	V160-T CE	3					
52038	V160-TP CE	4					
52039	V160-TP AUS	5					

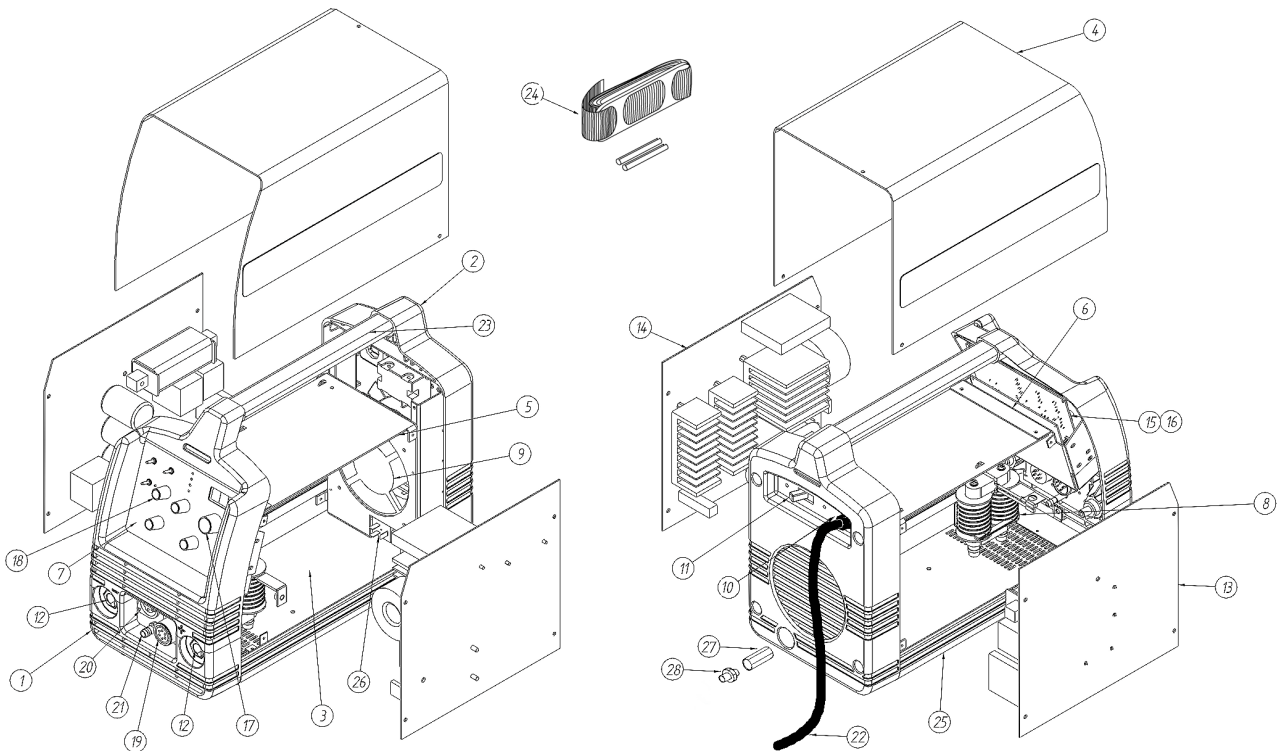


Figure A

Figure A: Machine Assembly

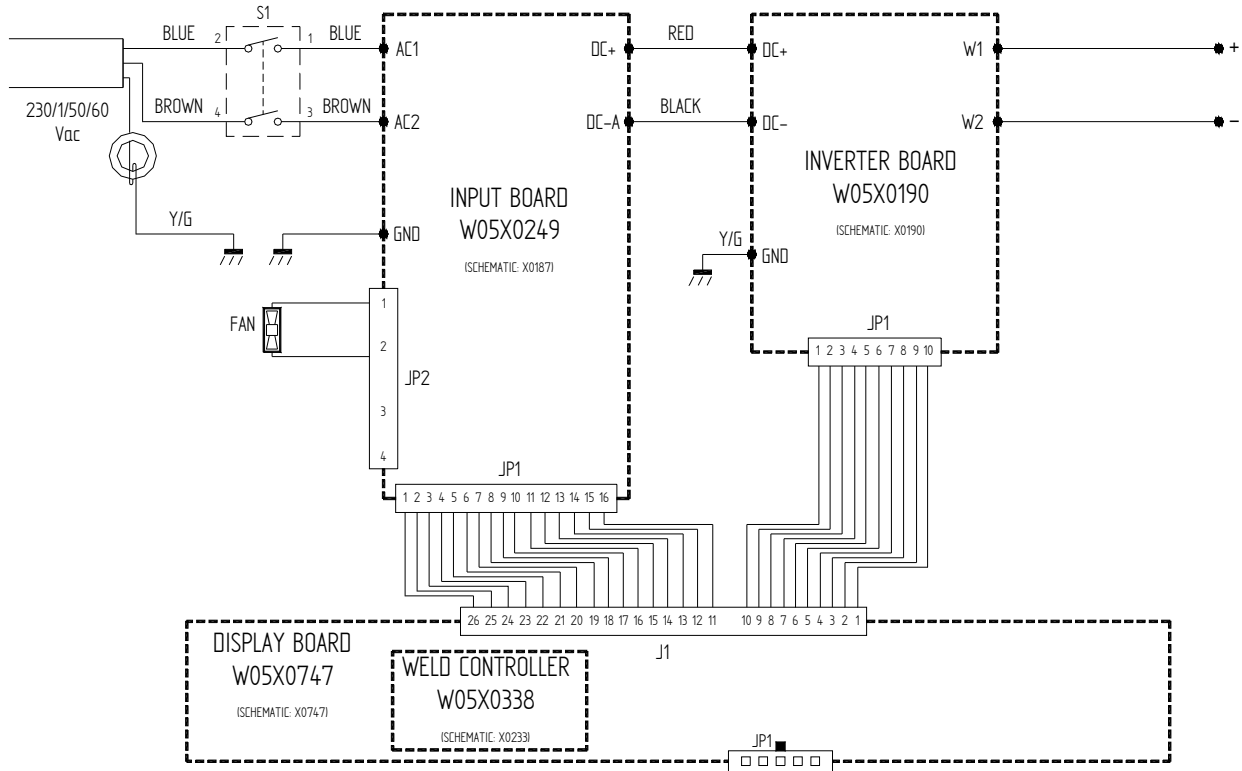
Item	Description	Part Number	QTY	1	2	3	4	5	6
1	FRONT PANEL	W95X0222R	1	X	X	X	X	X	
2	REAR PANEL	W95X0223R	1	X	X	X	X	X	
3	BASE	W93X0376R	1	X	X	X	X	X	
4	WRAPAROUND + SIDE NAMEPLATES	W93X0243R W07X0820R	1 1	X	X	X	X	X	
5	CENTER PANEL / BACK PANEL	W93X0377R	1	X	X	X	X	X	
6	CONTROL BOX	W93X0378R	1	X	X	X	X	X	
7	CONTROL PANEL S + FRONT NAMEPLATE S	W93X0824R W07X0783R	1 1	X	X	•	•	•	
7	CONTROL PANEL T + FRONT NAMEPLATE T	W93X0825R W07X0784R	1 1	•	•	X	•	•	
7	CONTROL PANEL TP + FRONT NAMEPLATE TP	W93X0825R W07X0785R	1 1	•	•	•	X	X	
8	HF TRANSFORMER	W59X0019R	1	•	•	X	X	X	
9	FAN	W7200003R	1	X	X	X	X	X	
10	INPUT CABLE CLAMP	W8400006R	1	X	X	X	X	X	
11	INPUT SWITCH	W7500012R	1	X	X	X	X	X	
12	DINSE CONNECTOR	W7600031R	2	X	X	X	X	X	
13	INPUT P.C. BOARD S	W05X0249R	1	X	X	•	•	•	
13	INPUT P.C. BOARD T / TP	W05X0187R	1	•	•	X	X	X	
14	INVERTER P.C. BOARD	W05X0190R	1	X	X	X	X	X	
15	DISPLAY P.C. BOARD S + SWITCH COVER CAP	W05X0747R W7500007R	1 1	X	X	•	•	•	
15	DISPLAY P.C. BOARD T + SWITCH COVER CAP	W05X0748R W7500007R	1 2	•	•	X	•	•	
15	DISPLAY P.C. BOARD TP + SWITCH COVER CAP	W05X0749R W7500007R	1 3	•	•	•	X	X	
16	CONTROL P.C. BOARD	W05X0233R	1	X	X	X	X	X	
17	KNOB (LARGE)	W8700030R	1	X	X	X	X	X	
18	KNOB (SMALL)	W8700016R	1	X	X	•	•	•	
18	KNOB (SMALL)	W8700016R	2	•	•	X	•	•	
18	KNOB (SMALL)	W8700016R	4	•	•	•	X	X	
19	REMOTE P.C. BOARD	W05X0322R	1	•	•	X	X	X	
20	TRIGGER CONNECTOR	W6100315R	1	•	•	X	X	X	
21	FEMALE QUICK CONNECT GAS CONNECTOR	W8800071R	1	•	•	X	X	X	
22	INPUT CORD EUROPE	W78X0248R	1	X	•	X	X	•	
22	INPUT CORD AUSTRALIA	W78X0369R	1	•	X	•	•	X	
23	HANDLE	W92X0228-1R	1	X	X	X	X	X	
24	CARRYING STRAP	W92X0264R	1	X	X	X	X	X	
25	SIDE RAIL	W95X0224R	2	X	X	X	X	X	
26	GAS SOLENOID	W8500004R	1	•	•	X	X	X	
27	GAS INLET CONNECTOR	W89X0205R	1	•	•	X	X	X	
28	GAS INLET ADAPTER FOR EUROPE	W8895221R	1	•	•	X	X	X	

Figure A: Machine Assembly

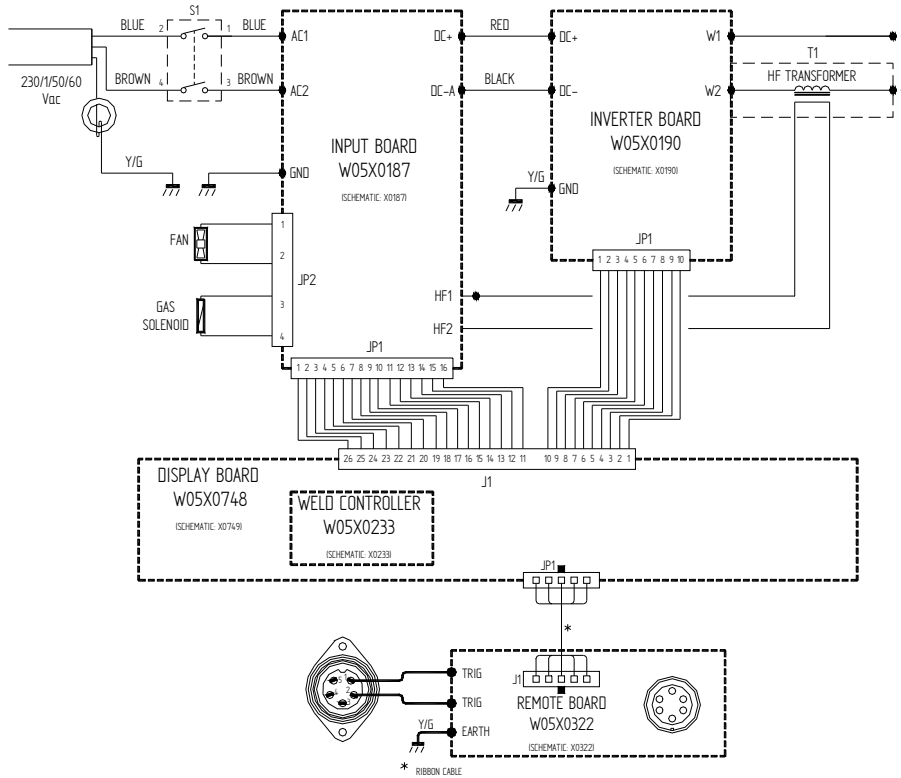
Item	Description	Part Number	QTY	1	2	3	4	5	6
1	FRONT PANEL	W95X0222R	1	X	X	X			
2	REAR PANEL	W95X0223R	1	X	X	X			
3	BASE	W93X0376R	1	X	X	X			
4	WRAPAROUND + SIDE NAMEPLATES	W93X0243R W07X0820R	1 1	X	X	X			
5	CENTER PANEL / BACK PANEL	W93X0377R	1	X	X	X			
6	CONTROL BOX	W93X0378R	1	X	X	X			
7	CONTROL PANEL S + FRONT NAMEPLATE S	W93X0824R W07X0783R	1 1	X	•	•			
7	CONTROL PANEL T + FRONT NAMEPLATE T	W93X0825R W07X0784R	1 1	•	X	•			
7	CONTROL PANEL TP + FRONT NAMEPLATE TP	W93X0825R W07X0785R	1 1	•	•	X			
8	HF TRANSFORMER	W59X0019R	1	•	X	X			
9	FAN	W7200003R	1	X	X	X			
10	INPUT CABLE CLAMP	W8400006R	1	X	X	X			
11	INPUT SWITCH	W7500012R	1	X	X	X			
12	DINSE CONNECTOR	W7600031R	2	X	X	X			
13	INPUT P.C. BOARD	W05X0250R	1	X	•	•			
13	INPUT P.C. BOARD	W05X0203R	1	•	X	X			
14	INVERTER P.C. BOARD	W05X0190R	1	X	X	X			
15	DISPLAY P.C. BOARD S + SWITCH COVER CAP	W05X0747R W7500007R	1 1	X	•	•			
15	DISPLAY P.C. BOARD T + SWITCH COVER CAP	W05X0748R W7500007R	1 2	•	X	•			
15	DISPLAY P.C. BOARD TP + SWITCH COVER CAP	W05X0749R W7500007R	1 3	•	•	X			
16	CONTROL P.C. BOARD	W05X0233R	1	X	X	X			
17	KNOB (LARGE)	W8700030R	1	X	X	X			
18	KNOB (SMALL)	W8700016R	1	X	•	•			
	KNOB (SMALL)	W8700016R	2	•	X	•			
18	KNOB (SMALL)	W8700016R	4	•	•	X			
19	REMOTE P.C. BOARD	W05X0322R	1	•	X	X			
20	TRIGGER CONNECTOR	W6100315R	1	•	X	X			
21	FEMALE QUICK CONNECT GAS CONNECTOR	W8800071R	1	•	X	X			
22	INPUT CORD UK 2V	W78X0435R	1	X	X	X			
23	HANDLE	W92X0228-1R	1	X	X	X			
24	CARRYING STRAP	W92X0264R	1	X	X	X			
25	SIDE RAIL	W95X0224R	2	X	X	X			
26	GAS SOLENOID	W8500004R	1	•	X	X			
27	GAS INLET CONNECTOR	W89X0205R	1	•	X	X			
28	GAS INLET ADAPTER FOR EUROPE	W8895221R	1	•	X	X			
29	FILTER BOARD	W05X0431R	1	X	X	X			
30	AUXILIARY FUSE	W7301000R	1	X	X	X			

Electrical Schematic

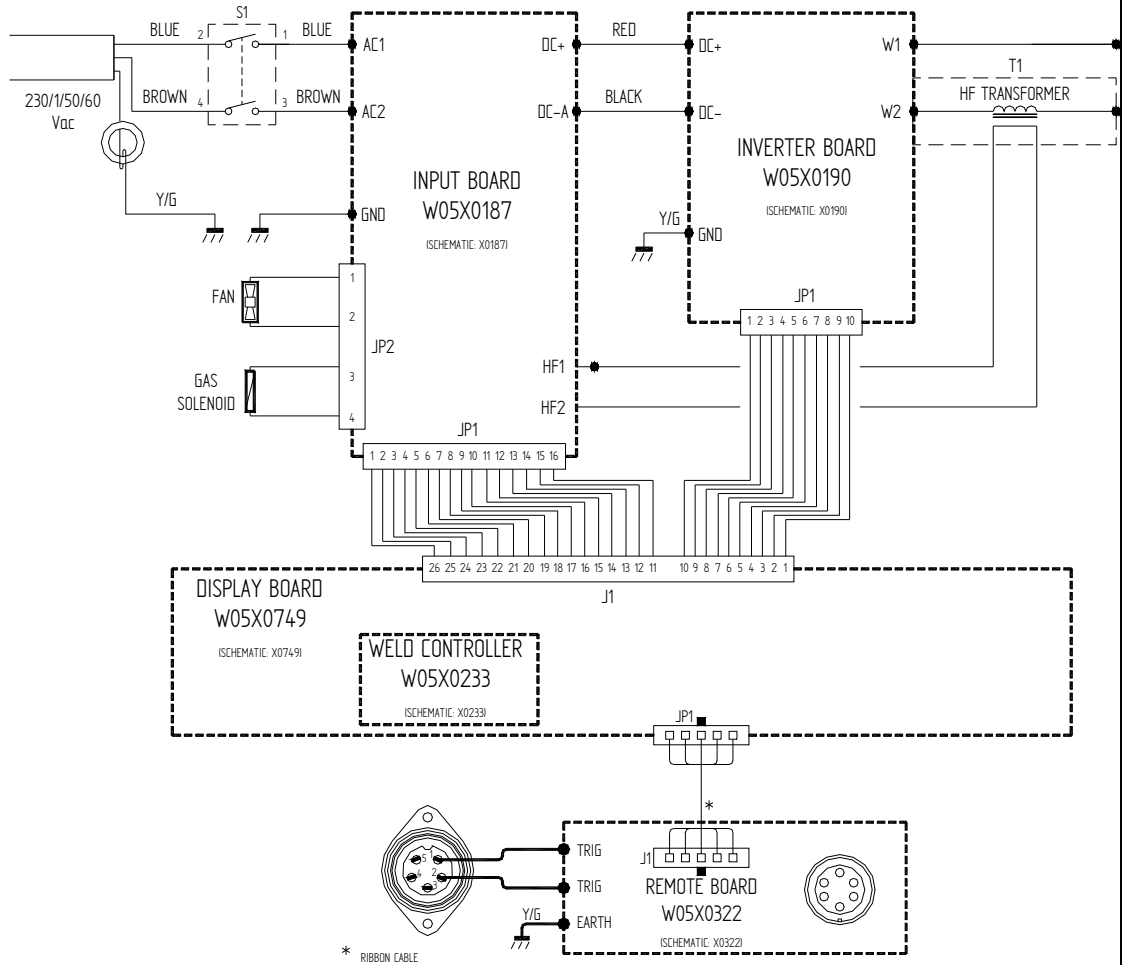
V160-S code 52032, 52033



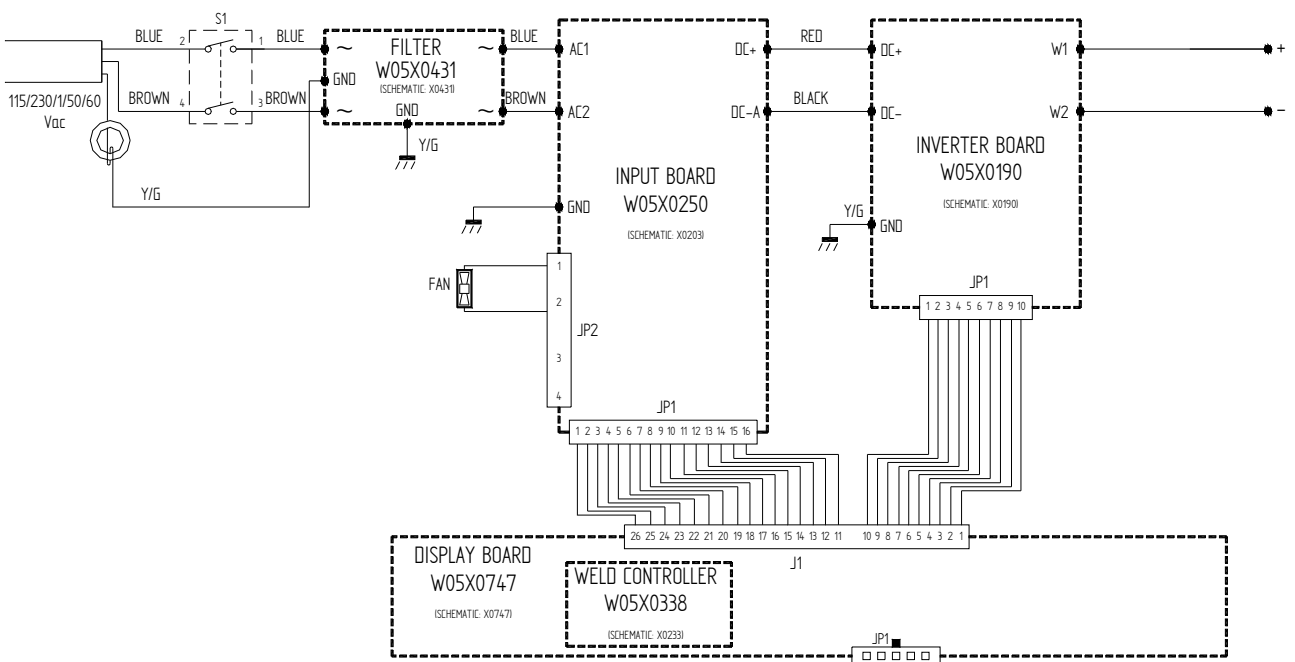
V160-T code 52035



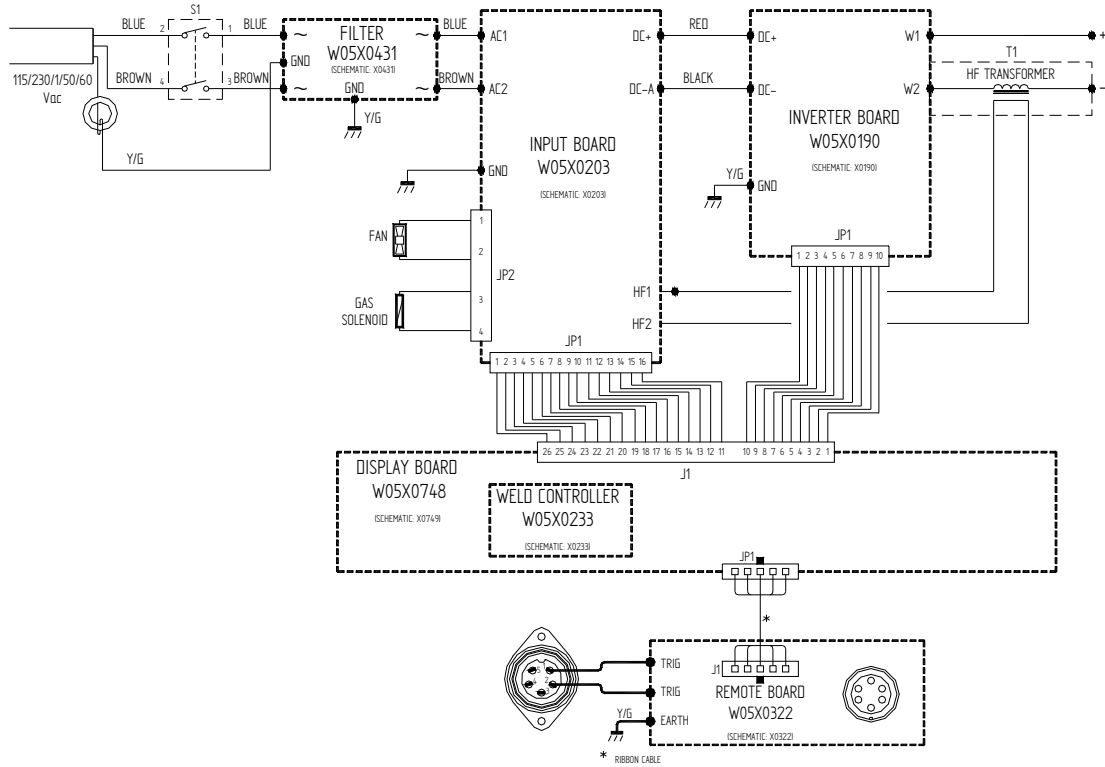
V160-TP code 52038, 52039



V160-S 2V code 52034



V160-T 2V code 52037



V160-TP 2V code 52040

